

CONFERENCE TABLES



I-TON →



ELEMENT →



VU →



COACH →



SCANDO →



FOREST →



I-TON Conference Table



I-TON Conference Table / Built-In Power Hubs



ELEMENT Conference Table



ELEMENT Conference Table / Built-In Power Hubs



VU Conference Table Built-In Power Hub



COACH Round Conference Table



COACH Rectangular Conference Table / Built-In Power Hub



COACH Round Conference Table



SCANDO Oval Conference Table / Built-In Power Hub



FOREST Conference Table Built-In Power Hub

I-TON / ELEMENT / VU

TABLE TOP

/ 25mm Melamine Faced Chipboard (MFC) with 2 mm ABS edging

/ Optional cable management access flap

LEGS

/ Metal profile. Powder coated

/ Adjustable feet. Can be adjusted up to 10mm

COACH

TABLE TOP

/ 12mm Compact Laminate with Black Filler

/ 18 mm Melamine Faced Chipboard (MFC) with 2 mm ABS edging

/ Optional cable management access flap

LEGS

/ Metal Tape 80 x 8 mm. Powder coated

/ Adjustable Feet. Can be adjusted up to 10 mm

SCANDO / FOREST

TABLE TOP

/ 25 mm Melamine Faced Chipboard (MFC) with 2 mm ABS edging

/ Optional cable management access flap

LEGS

/ Natural oak wood

/ Adjustable feet. Can be adjusted up to 10 mm

CABLE MANAGEMENT

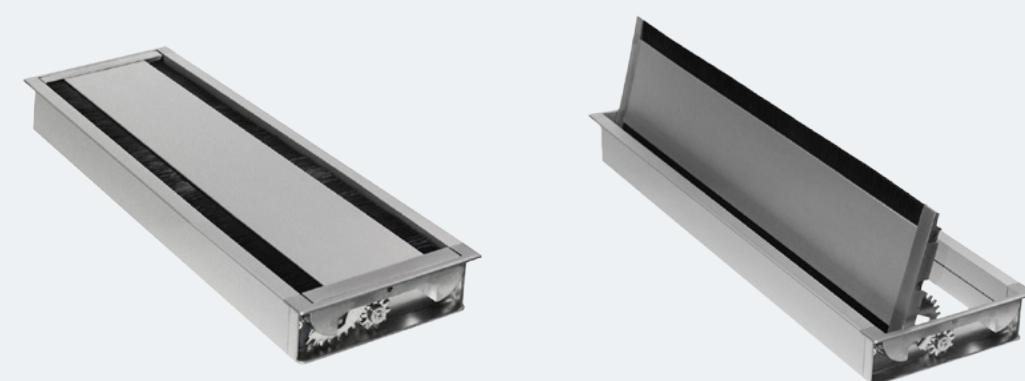


CABLE MANAGEMENT



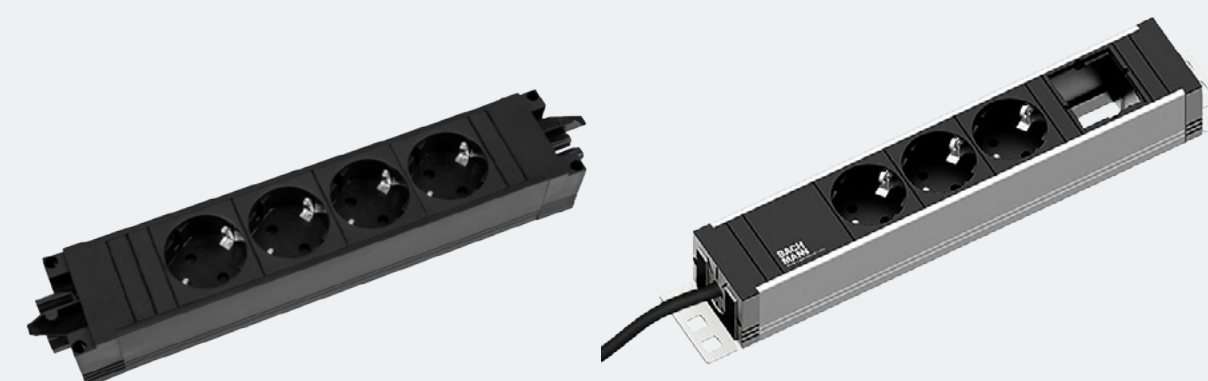
CABLE MANAGEMENT ACCESS FLAP

/ Axessline Duo Cover



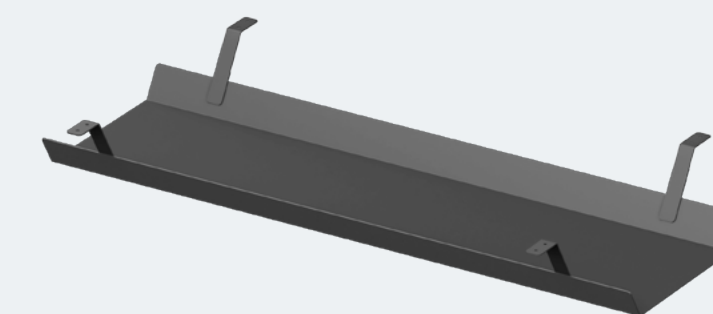
OUTLETS

/ STEP Power Strip



CABLE TRAY

/ KU3

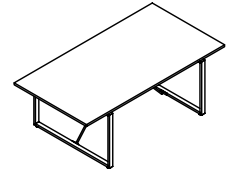


CABLE CHANNEL

/ Bachmann FLEX2

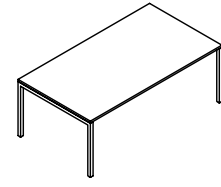


I-TON



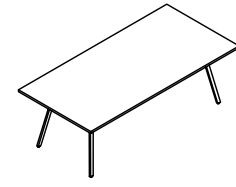
TK50	2100	1150	745
TK51	2300	1150	745
TK52	2500	1150	745

ELEMENT



EM6	2000	1100	750
-----	------	------	-----

VU



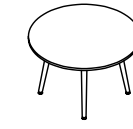
U30	1800	1100	750
U31	2255	1100	750

COACH



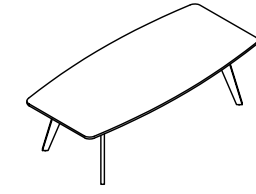
CS1X	Ø 900	738
CS1	Ø 900	744

SCANDO

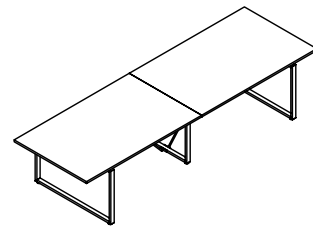


SP12	Ø 1200	745
------	--------	-----

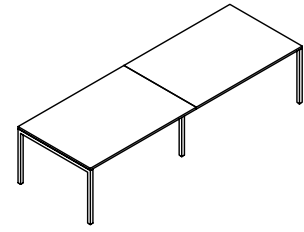
FOREST



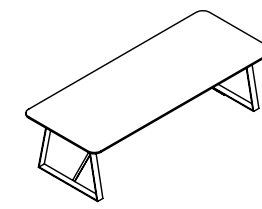
FM26	2600	1200	750
------	------	------	-----



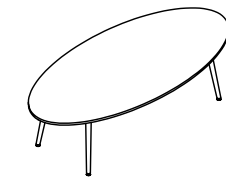
TK53	3500	1150	745
TK54	3900	1150	745
TK55	4300	1150	745



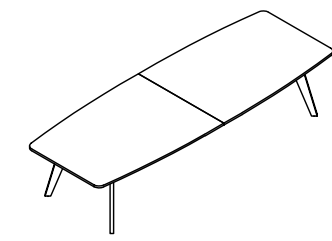
EM8	2720	1100	750
EM10	3220	1100	750
EM12	3960	1100	750



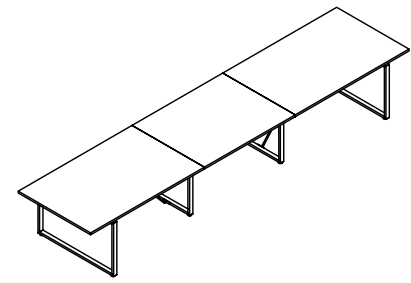
CS2X	2400	1100	738
CS2	2400	1100	744
CS3X	2750	1100	738
CS3	2750	1100	744



SP28	2750	1300	745
------	------	------	-----



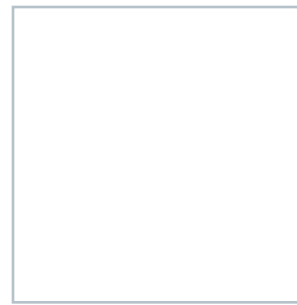
FM36	3600	1300	750
------	------	------	-----



TK56	4900	1150	745
TK57	5500	1150	745
TK58	6100	1150	745

I-TON, ELEMENT, VU, COACH

METAL



W3
RAL 9003 white,
smooth matt



G6
RAL 9006, metallic

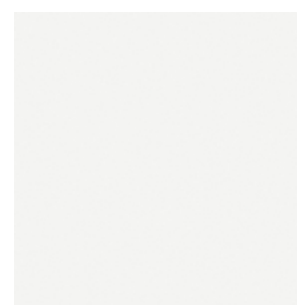


G2
RAL 7012 basalt
grey, smooth matt



B
RAL 9005 black,
smooth matt

MFC



1
W10003VV White,
Pfleiderer



2
U708 ST9 Light Grey,
Egger



8
3025 SN Light
Sonoma Oak,
Kronospan



6
R20119LN American
Oak, Pfleiderer



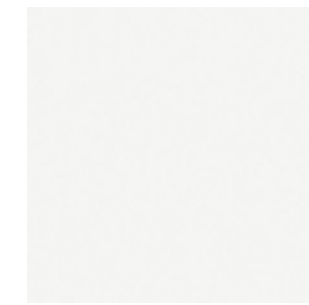
7
U12290MP
Anthracite,
Pfleiderer



9
R20168 LN
Sherwood Mocca,
Pfleiderer

COACH +

COMPACT



C1
12mm Compact
White VV 13XLS,
black core

SCANDO

METAL



W3
RAL 9003 white,
smooth matt



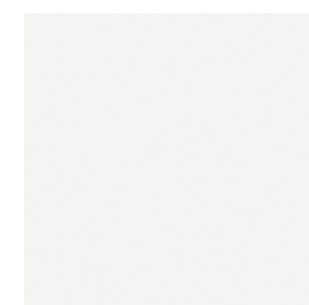
B
RAL 9005 black,
smooth matt

SOLID WOOD



SO
Solid Oak,
varnished

MFC



1
W10003VV White,
Pfleiderer



2
U708 ST9 Light Grey,
Egger



7
U12290MP
Anthracite,
Pfleiderer

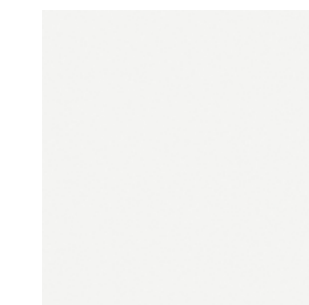
FOREST

SOLID WOOD



SO
Solid Oak,
varnished

MFC



1
W10003VV White,
Pfleiderer



2
U708 ST9 Light Grey,
Egger