



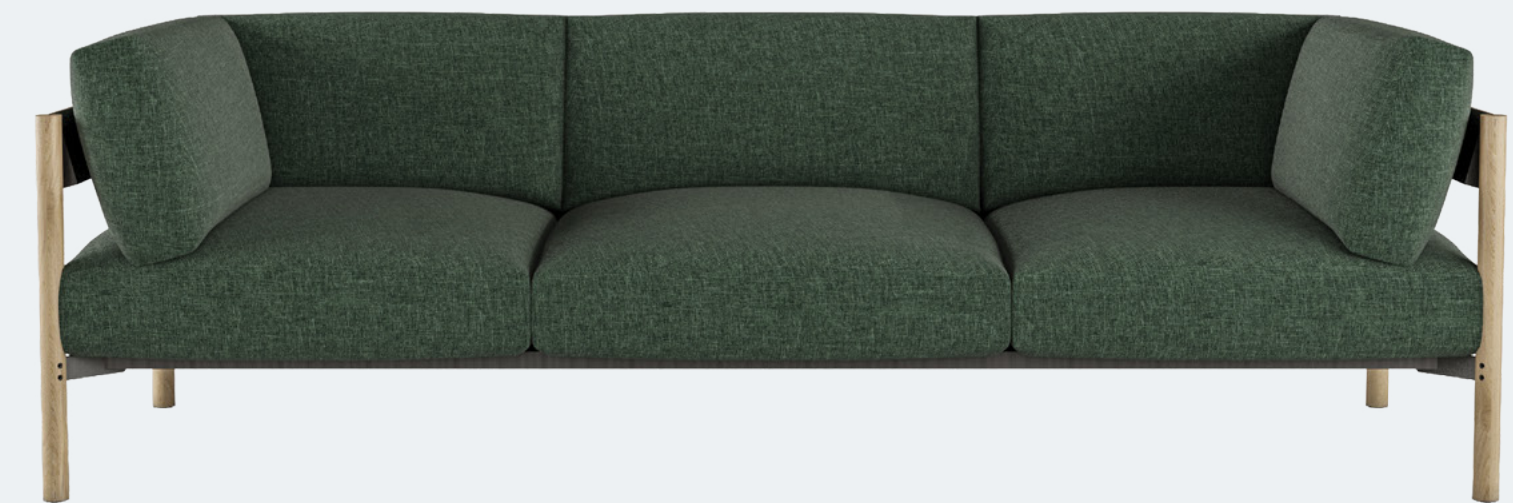
BASTION Armchair / Wooden Legs



BASTION Modular sofa / Metal Legs / Integrated tables: CDF tabletop



BASTION Three-Seater Sofa / Wooden Legs



BASTION Three-Seater Sofa / Wooden Legs

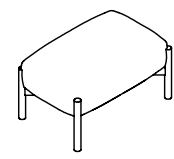
WOODEN LEGS

- / Cushions: PU Foam.Polyester ball fiber filling. Fabric
- / Arms: Solid oak wood. Warnished
- / Legs: Solid oak wood. Ø 43mm. Warnished
- / Felt feet

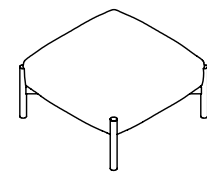
METAL LEGS

- / Cushions: PU Foam.Polyester ball fiber filling. Fabric
- / Arms: Metal plate
- / Legs: Metal tube Ø 28mm. Powder coated
- / Adjustable feet. Can be adjusted up to 10 mm

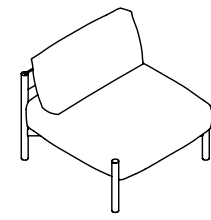




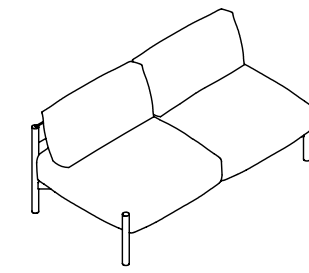
BV0.5 848 535 470
 BM0.5 848 535 470



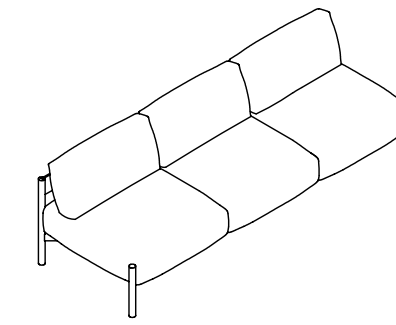
BV1 848 848 470
 BM1 848 848 470



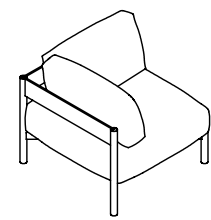
BV1B 848 862 850 / 470
 BM1B 848 862 850 / 470



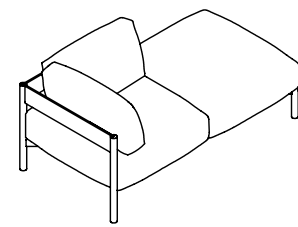
BV2B 1653 862 850 / 470
 BM2B 1653 862 850 / 470



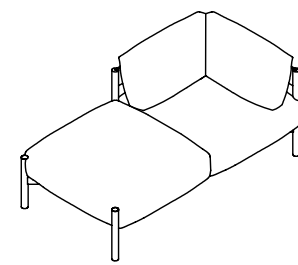
BV3B 2458 862 850 / 470



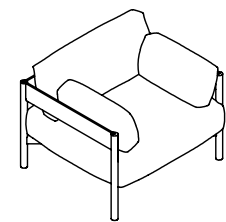
BV1C 848 848 850 / 470
 BM1C 848 848 850 / 470



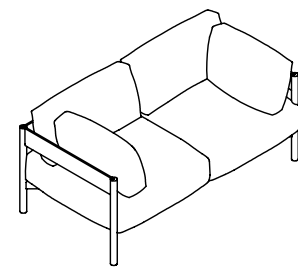
BV1.5CL 1653 862 850 / 470
 BM1.5CL 1653 862 850 / 470



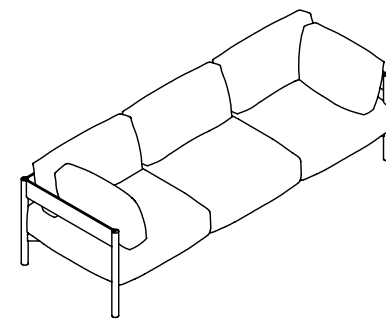
BV1.5CR 1653 862 850 / 470
 BM1.5CR 1653 862 850 / 470



BV1A 848 862 850 / 470
 BM1A 848 862 850 / 470



BV2A 1653 862 850 / 470
 BM2A 1653 862 850 / 470



BV3A 2458 862 850 / 470
 BM3A 2458 862 850 / 470



BVR1 Ø 360 640
 BMR1 Ø 360 632

WOOD



SO
Solid Oak, varnished

CDF



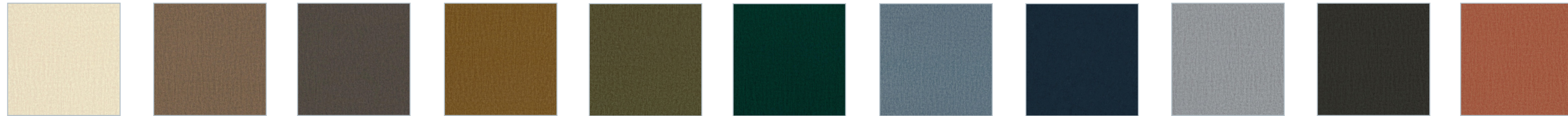
CDF
CDF, varnished

METAL



BS
RAL 9005
black sand texture

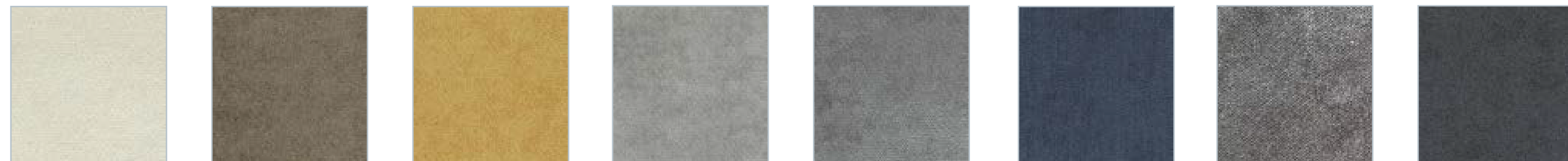
FABRICS Monolith



02 09 20 48 38 37 72 77 84 95 61

Manufacturer	Composition	Width	Abrasion resistance	Weight	Flammability
Davis	100% polyester	140 cm	100 000 MD	330 g/m ²	EN 1021-1

FABRICS Havana



24 39 65 06 10 89 17 19

Manufacturer	Composition	Width	Abrasion resistance	Weight	Flammability
Fabb	96% Polyester 4% Nylon	140 cm	50 000 MD	400 g/m ²	EN 1021-1/2 BS 5852 Crib5

FABRICS Cinema



17 Warm grey



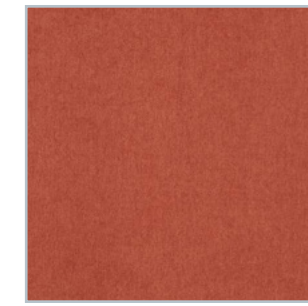
26 Beige



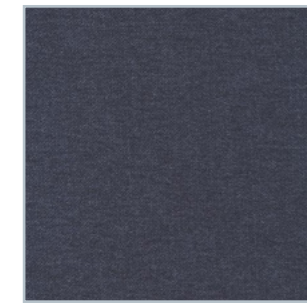
07 Antrachite



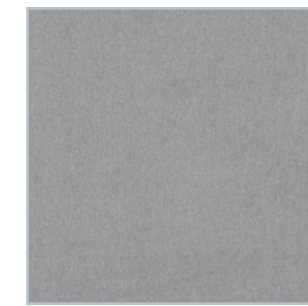
13 Leaf



31 Rust



02 Denim



27 Silver



47 Koks

Manufacturer

Nevotex

Composition

96% Polyester
4% Nylon

Width

140 cm

Abrasion resistance

65 000 MD

Weight

400 g/m²

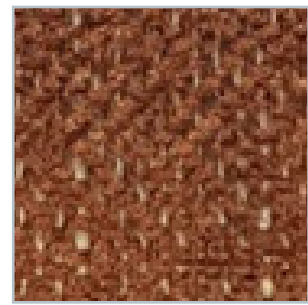
Flammability

BS 5852 Part I

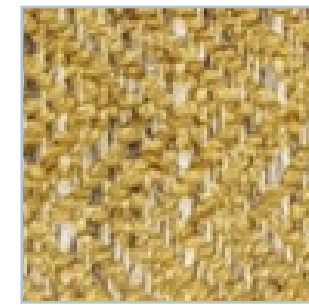
FABRICS Brule



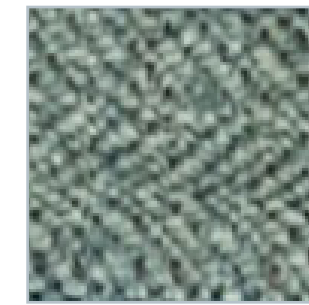
50



63



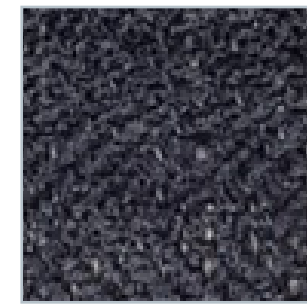
53



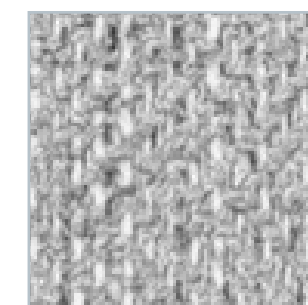
54



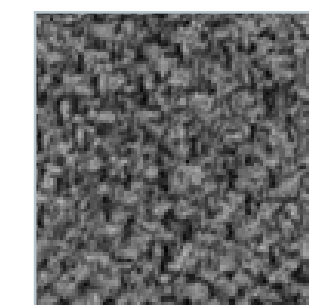
31



59



66



38

Manufacturer

Nevotex

Composition

93% Polyester
7% Acrylic

Width

140 cm

Abrasion resistance

40 000 MD

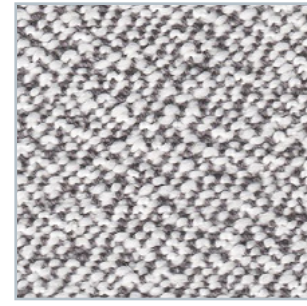
Weight

400 g/m²

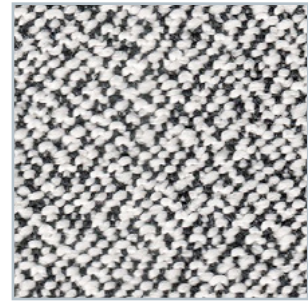
Flammability

BS 5852 Part I

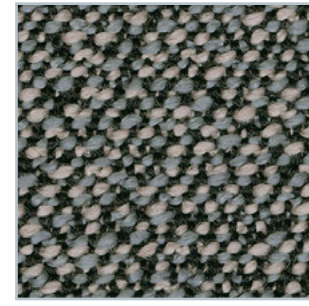
FABRICS Sera



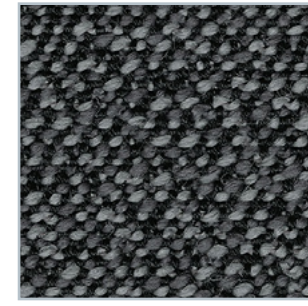
porcelain



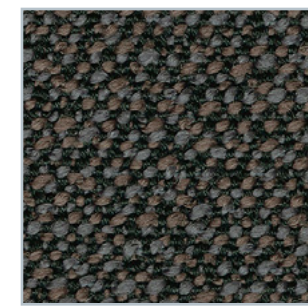
pepper



gravel



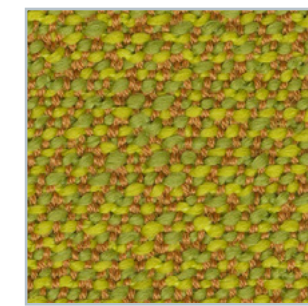
graphit



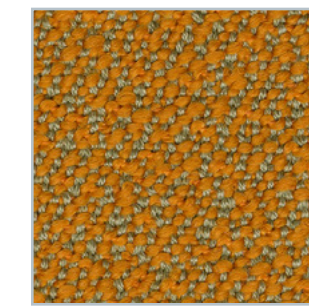
torba



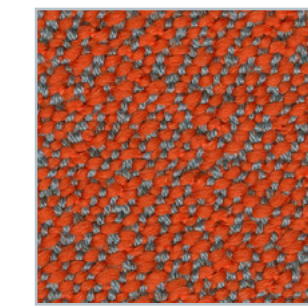
rosewood



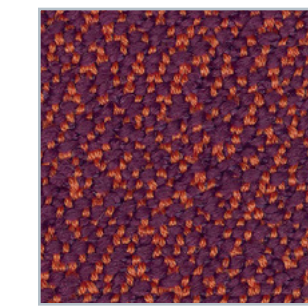
tivoli



chutney



glow



berry



amur

Manufacturer

Rohi

Composition

94% Wool
6% Polyester

Width

140 cm

Abrasion resistance

122 000 MD

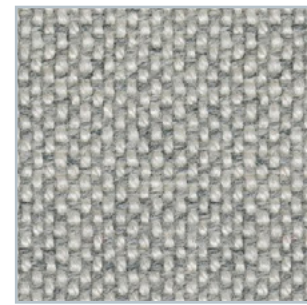
Weight

650 g/m²

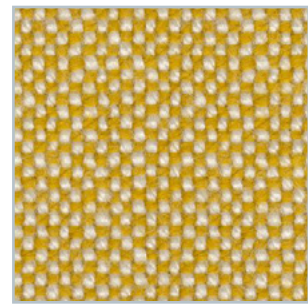
Flammability

EN 1021-1/2
BS 5852 Part 1
BS 5852 Crib5

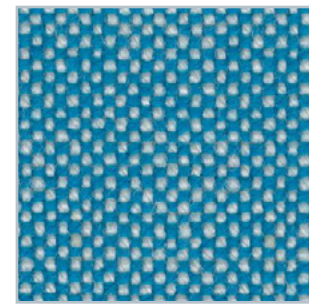
FABRICS Hallingdal 65



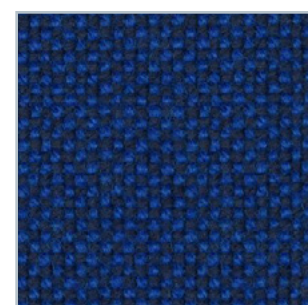
110



407



840



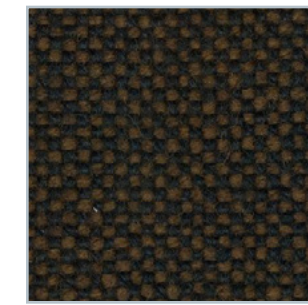
754



944



694



370



180

Manufacturer

Kvadrat

Composition

70% Wool
30% Viscose

Width

130 cm

Abrasion resistance

100 000 MD

Weight

795 g/lm

Flammability

EN 1021-1/2
BS 5852 part 1
BS 5852 Crib5