

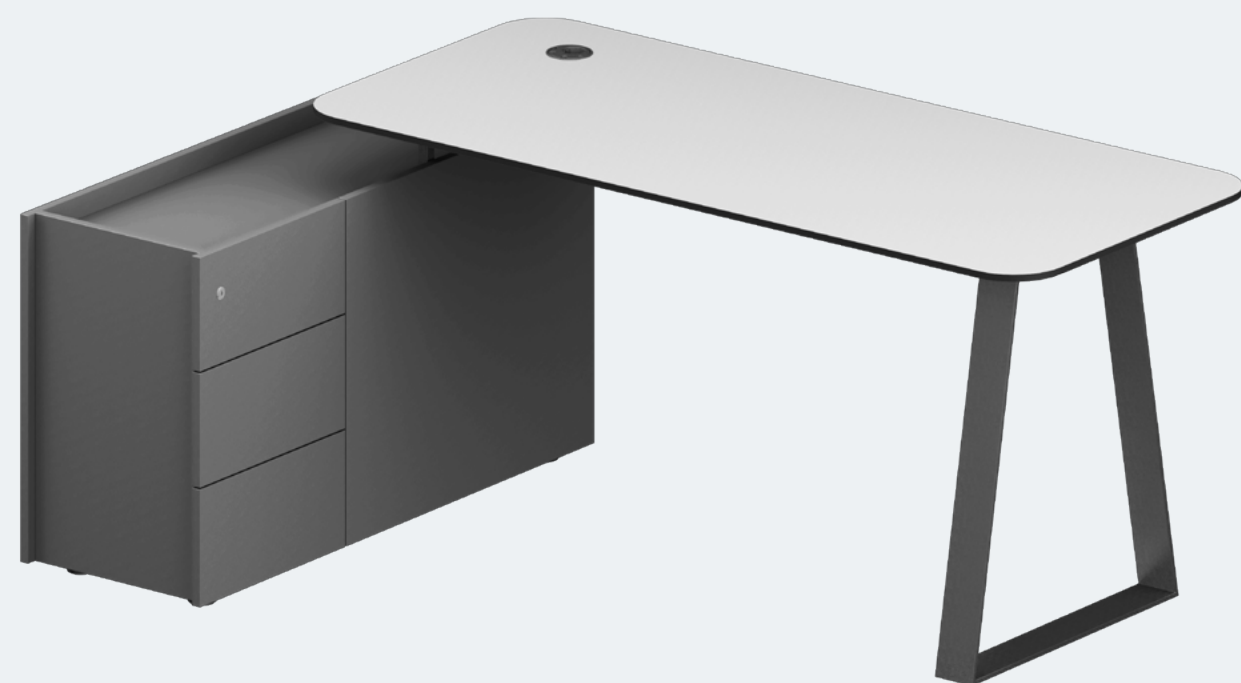
COACH SERIES DESKS

The COACH series is characterised by outstanding design with a solid executive look.





COACH Desk / Modesty Panel / Three-Drawer Cabinet



COACH Desk / Two-Segment Side Cabinet



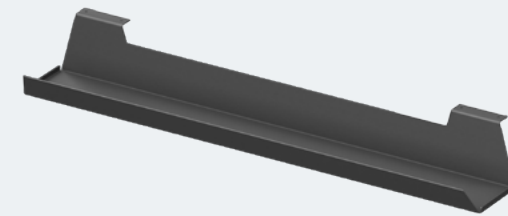
COACH Benching System (Double) With Partition / Three-Segment Side Cabinets

DESK TOP

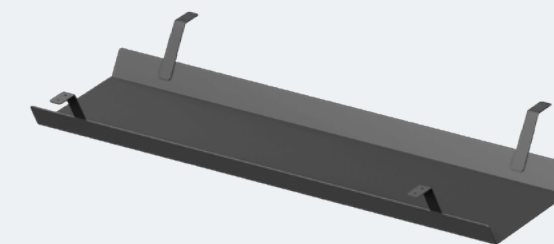
- / 12 mm Compact Laminate with Black Filler
- / 18 mm Melamine Faced Chipboard (MFC) with 2 mm ABS edging
- / Cut-out for power hub

METAL TRAY

- / Attached to the desk top.
- Powder coated



↑ Single metal tray



↑ Double metal tray

SCREEN

- / 18 mm chipboard. Thermo-bonded wadding. Fabric
- / Attached to the desk top with two metal brackets



LEGS

- / Metal Tape 80 x 8 mm. Powder coated
- / Adjustable feet. Can be adjusted up to 10 mm

METAL FRAME

- / Fixed length. Metal profile 25x25 mm. Powder coated



SIDE CABINET

- / 18mm Melamine Faced Chipboard (MFC)
- / Outer edges with 2 mm ABS edging
- / Inner edges with 0.4 mm ABS edging
- / Metabox soft-closing runners. White
- / Central locking
- / Adjustable feet. Can be adjusted up to 10 mm



Metabox soft closing runners ↑



Adjustable height shelf ↑



↑ Adjustable feet

Cut-out with plastic cover ↓

Power Hub ↓

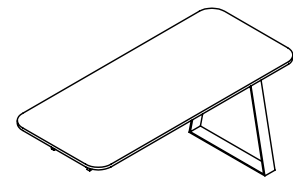


↑ Cut-out with plastic cover for cable management

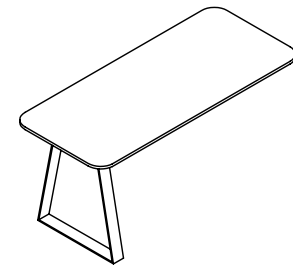
MODESTY PANEL

- / 12 mm Compact Laminate with Black Filler
- / 18 mm Melamine Faced Chipboard (MFC) with 2 mm ABS edging
- / Attached to the desk top with two metal brackets

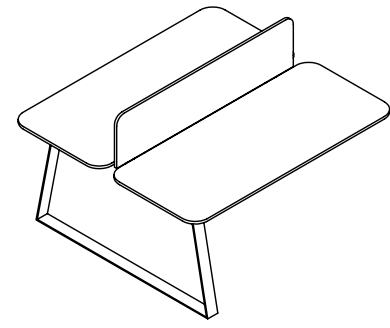




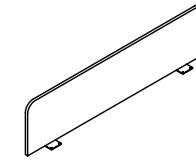
C16XL 1600 700 738
 C18XL 1800 700 738
 C16L 1600 700 744
 C18L 1800 700 744



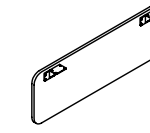
C16XR 1600 700 738
 C18XR 1800 700 738
 C16R 1600 700 744
 C18R 1800 700 744



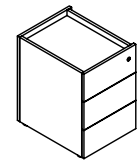
C26X 1600 700 738
 C28X 1800 700 738
 C26 1600 700 744
 C28 1800 700 744



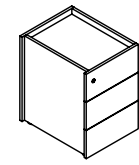
CP6T 1400 22 350
 CP8T 1600 22 350



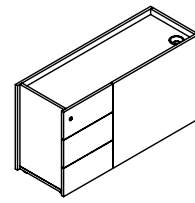
CU6X 1000 12 350
 CP8X 1200 12 350
 CU6 1000 18 350
 CU8 1200 18 350



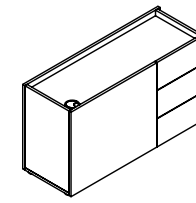
C01L 430 550 630



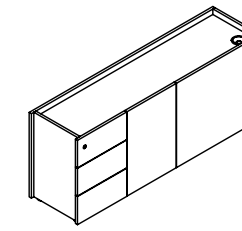
C01R 430 550 630



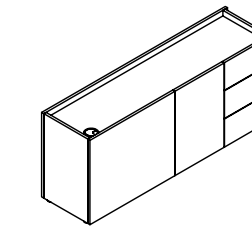
C03L 1120 400 630



C03R 1120 400 630



C05L 1520 400 630



C05R 1520 400 630

METAL



W3
RAL 9003 white,
smooth matt



G6
RAL 9006, metallic



G2
RAL 7012 basalt
grey, smooth matt



B
RAL 9005 black,
smooth matt

MFC



1
W10003VV White,
Pfleiderer



2
U708 ST9 Light Grey,
Egger



7
U12290MP
Anthracite,
Pfleiderer



8
3025 SN Light
Sonoma Oak,
Kronospan



6
R20119LN American
Oak, Pfleiderer



9
R20168 LN
Sherwood Mocca,
Pfleiderer

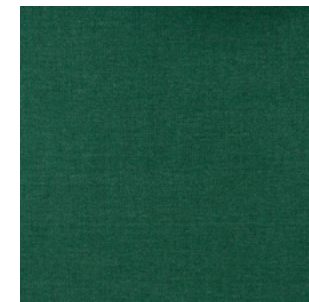
FABRIC Viggo



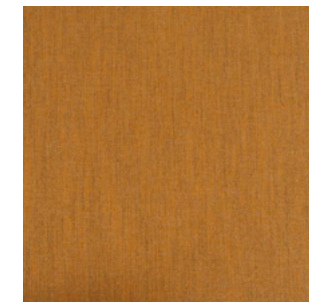
10 Sugar



36 Cinnamon



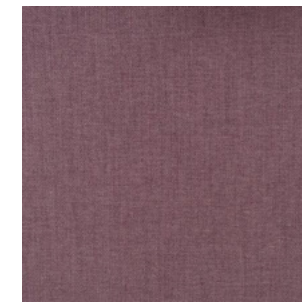
3 Avocado



5 Curry



11 Rose hip



51 Lilac



32 Soda



2 Indigo

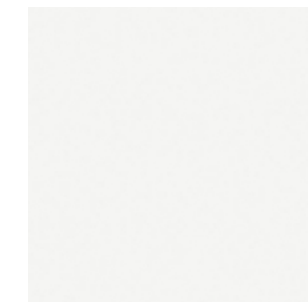


17 Tin



7 Graphite

COMPACT



C1
12mm Compact
White VV 13XLS,
black core

Manufacturer

Nevotex

Composition

93% Polyester
5% Cotton
2% Nylon

Width

140 cm

Abrasion resistance

78 700 MD

Weight

300 g/m²

Pilling

4

Flammability

BS 5852:1979 part 1
EN 1021 1:2014